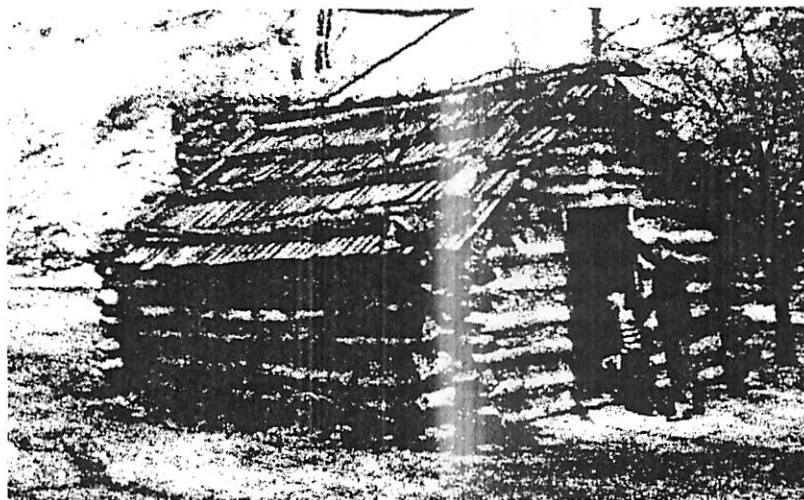


Living quarters at South Redoubt

(Conjectural-based on similar sites)



This section would describe the general construction of the living quarters, layout of the hut sites, hut contents etc.

The South Batteries

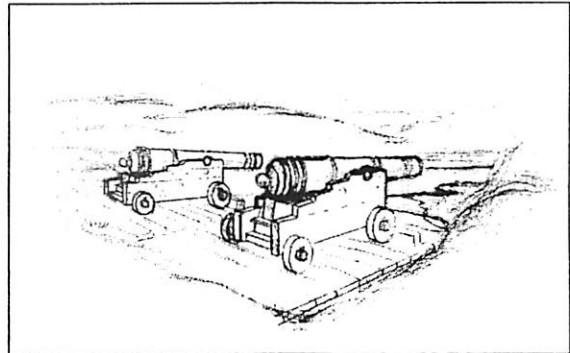
(Conjectural)



Southeast View

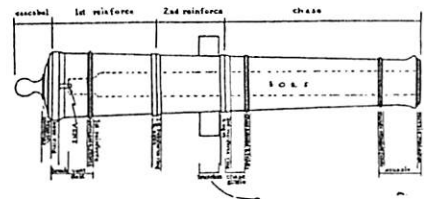
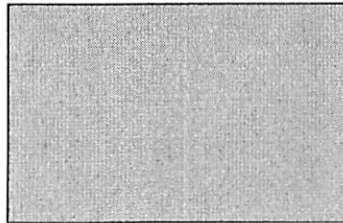


Southwest View



Artillery

This section would describe the types and numbers of artillery which could have been used in the batteries.



Garrison Carriage

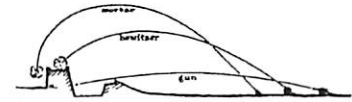
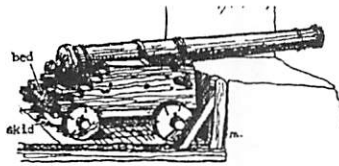
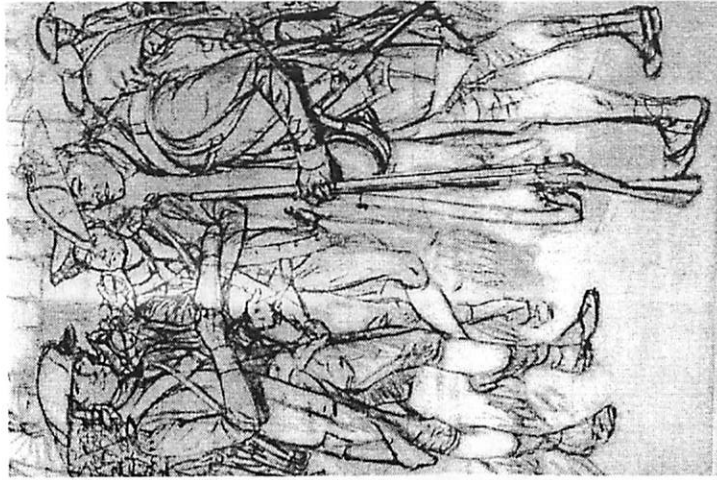


FIGURE 22—TRAJECTORIES. Maximum range of eighteenth century guns was about 1 mile.
Guns could: Better heavy construction with solid shot at long or short range; destroy fort passages and, by rocket fire, distant cannon, about grape, canister, or bomb against unarmored personnel.
Mortars could: Reach targets behind obstructions; use high angle fire to shoot bombs, destroying construction and personnel.
Howitzers could: Move more easily in the field than mortars; reach targets behind obstructions by high angle fire; shoot larger projectiles than could field guns of similar weight.

The Troops at South Redoubt



This section will describe the men who were stationed here at South Redoubt. Where they came from, what their daily routine was, what they did in their spare time, what they wore, ate, etc.

